



LATEST · LIVE · LAND · FOR PEOPLE

HOUSE DESIGN 2

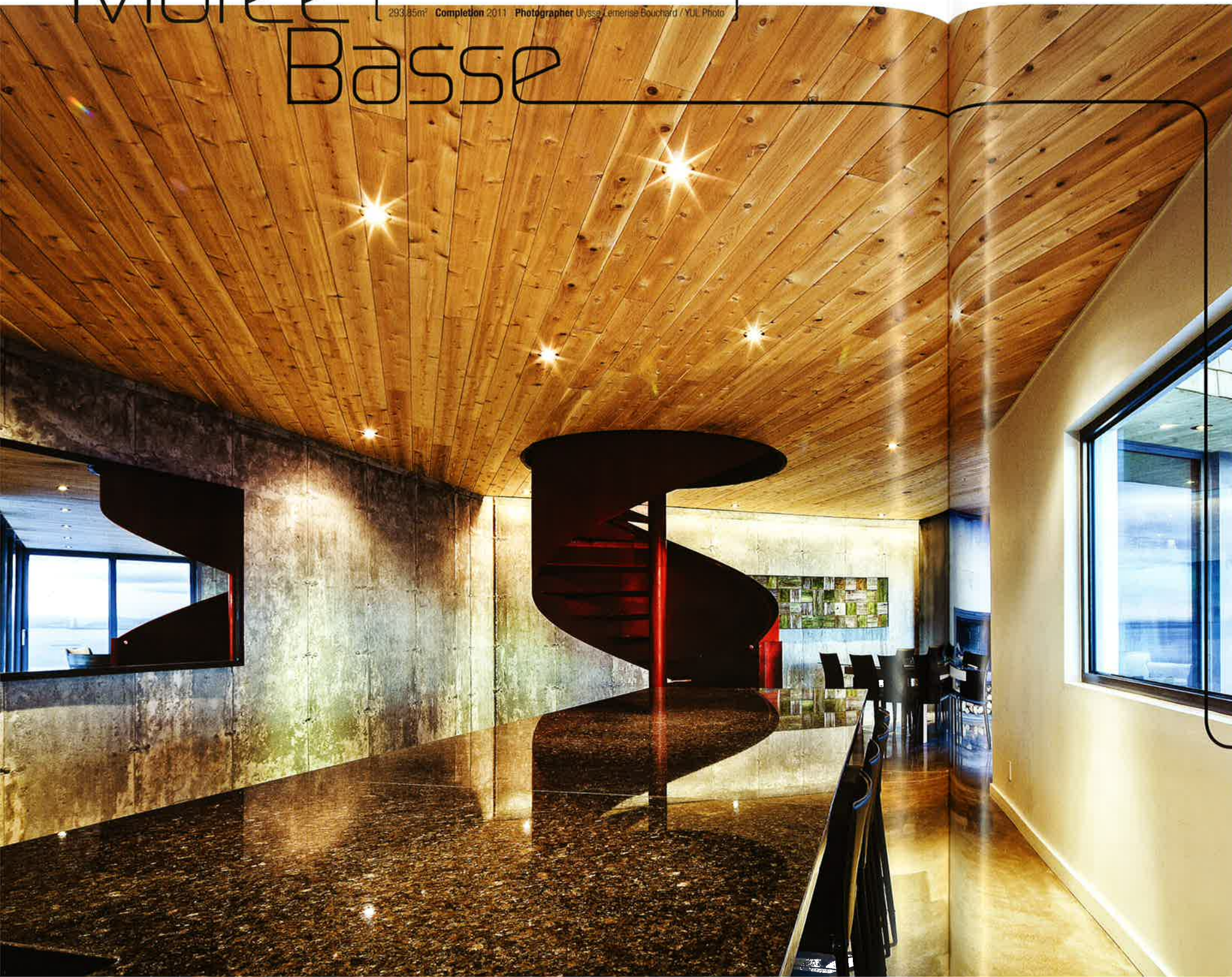
- /APARTMENT HOUSE & TOWNHOUSE
- /PENTHOUSE & LOFT
- /LARGE-SIZED HOUSE
- /MID-SIZED HOUSE
- /COMPACT HOUSE



Malbaie VI

Marée Basse

Design MU Architecture Design team Jean-Sébastien Herr, Charles Côté, Audrey Lavallée Structural engineer I-Level Location Québec, Canada Total area 293,85m² Completion 2011 Photographer Ulysse Lemerise-Bouchard / YUL Photo



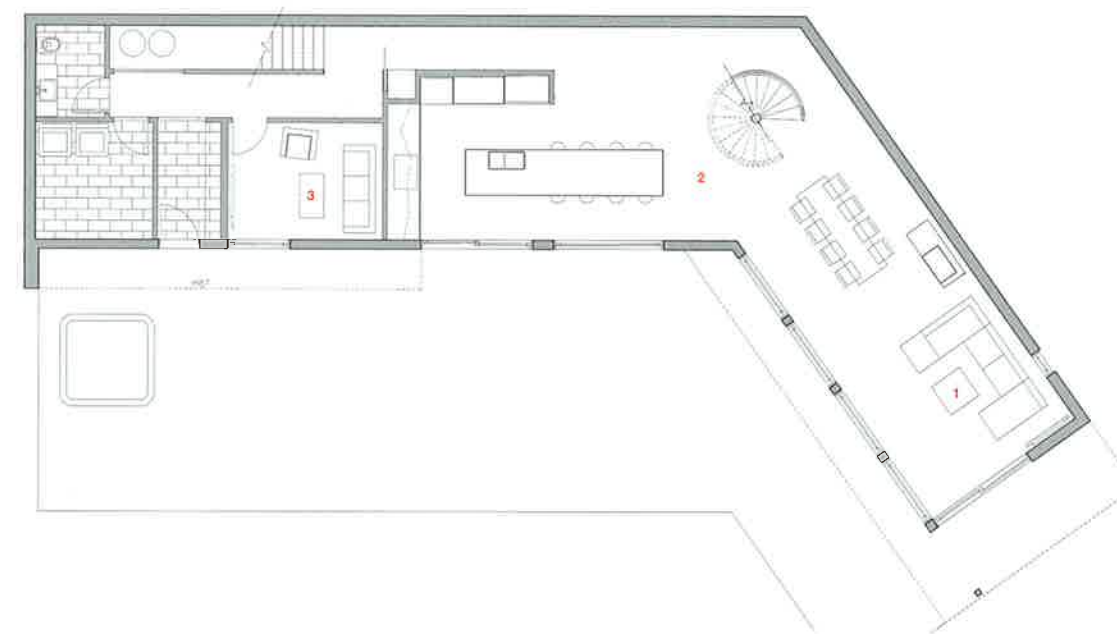
{ The concept of the residence revolves around two off-centered volumes positioned in such a way to take in as much sunlight as possible and to make the most out of the different viewpoints. These two volumes seem to emerge from the forest and project themselves towards the River and La Malbaie. The whole house forms an angle that embraces a huge private terrace at the lower level. Two distinct volumes covered with cedar shingles. At first glance, it is both mysterious and unsettling. As we move towards and between the two blind volumes, we discover an exceptional view. This observatory is in fact a green roof under which lies a vast residence. The higher volumes, apparently isolated, house the bedrooms and the bathrooms. They are connected to an opened and largely fenestrated lower level containing the living areas. At the center of the house, an architectural red metal spiral staircase acts like a pivot to the two principal axes. The living room, dining room and kitchen are connected to this staircase which incidentally serves as an ever-present visual signal. The kitchen, ergonomic and very contemporary, contains a large island counter which is used as a work surface and a dining table. It sits in front of a large panoramic window offering stunning views over the river. }

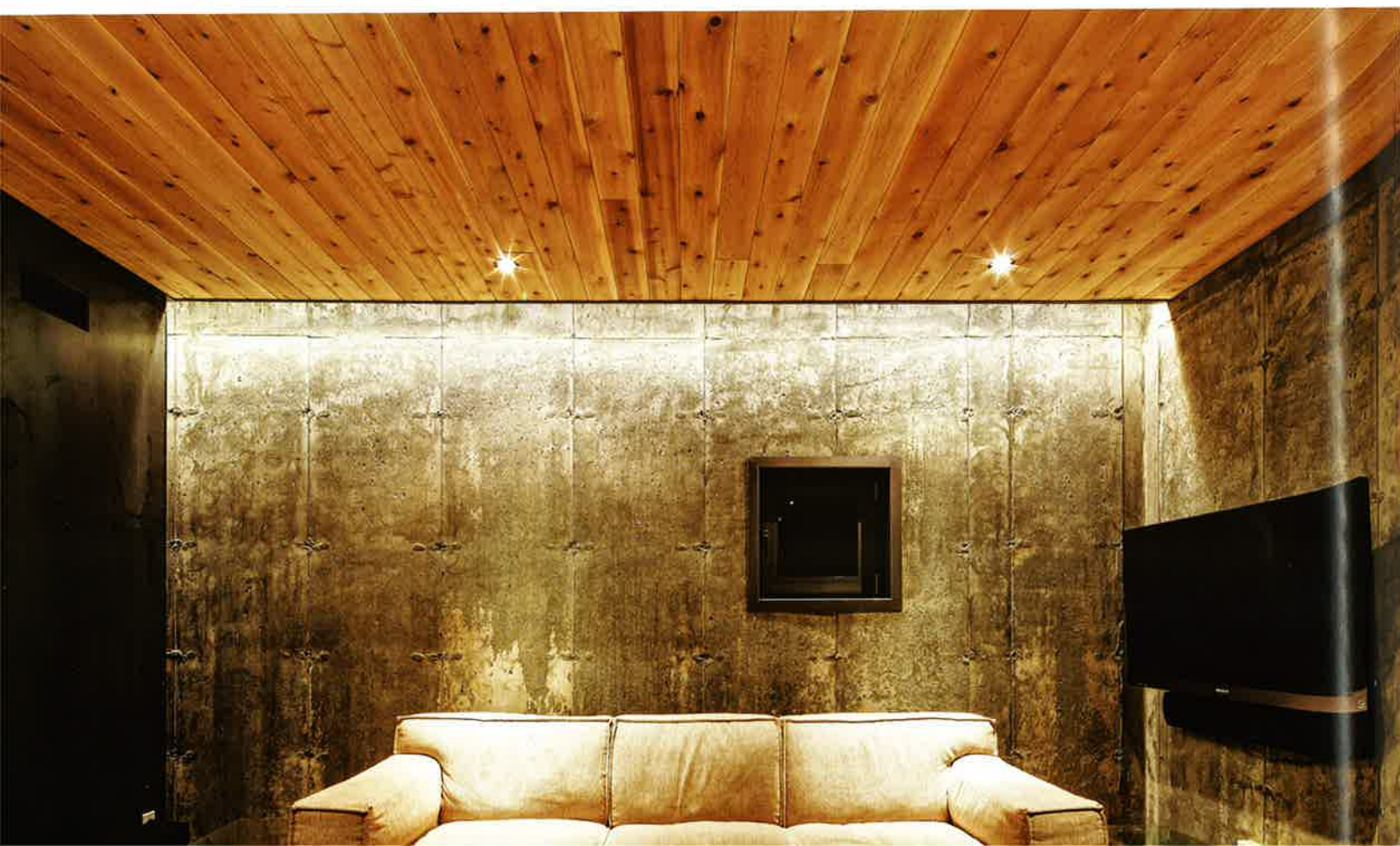
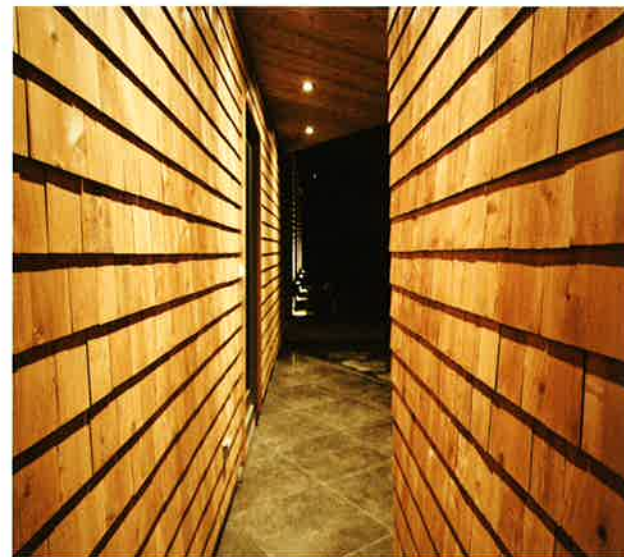
MU Architecture's Montreal based firm projects include since early 2010: new construction design, institutional industrial, residential, commercial and also efficient redevelopment of built spaces. Their desire to build sensitive spaces is characterized by the conceptual nature of their projects' design, high quality achievement and their obvious concern for details. The firm's assets are based on its ability to manage and adapt to a variety of situations, its innovative designs, its constant concern for green architecture and new technologies while maintaining schedules and established budgets. The regulations high compliance of their work and the monitoring and support that they offer throughout the project process and their close collaboration with various trades of work are insurance to the project's success.





- 1 LIVING ROOM
- 2 DINING / KITCHEN
- 3 RECEPTION ROOM





- 1 BEDROOM
- 2 BATHROOM

